



COLORADO

Department of Transportation

Survey123 Quick Start Guide

Jan. 19, 2023



Quick Start Guide

The ADA Curb Ramp Compliance Survey allows you to create or gather information on all CDOT-owned curb Ramps using Survey123 for ArcGIS on a smartphone, tablet, or PC

Are you new to the application?
Use this guide to learn the basics.

Download and Setup the Application:

Survey123 for ArcGIS

iOS: Open Apple App Store
Search for “ArcGIS Survey123”
Download the application and launch

Android: Open Google Play Store
Search for “ArcGIS Survey123”
Download the application and launch



Sign into the Application
Click on **Manage ArcGIS connections** to sign into the App.



Survey123 Quick Start Guide

Click on Add connection

Connections

Select your active ArcGIS connection

✓ ArcGIS Online

+ Add connection

Connections
Enter the URL provided by the Organization
maps.codot.gov/portal

Click on + Add

Connections

Select your active ArcGIS connection

✓ ArcGIS Online

Add Connection

ArcGIS connection URL

https://maps.codot.gov/portal

Use external browser for sign in

[Learn more](#)

+ Add Cancel

+ Add connection



Survey123 Quick Start Guide

Click on **Back arrow** once the Portal is added

Connections

Select your active ArcGIS connection

- ArcGIS Online
- ✓ CDOT GeoHub (Production) <https://maps.codot.gov/portal>

+ Add connection

Click on **Sign in with CDOT GeoHub (Production)**

ArcGIS®
Survey123

Sign in with **CDOT GeoHub (Production)**

Manage ArcGIS connections

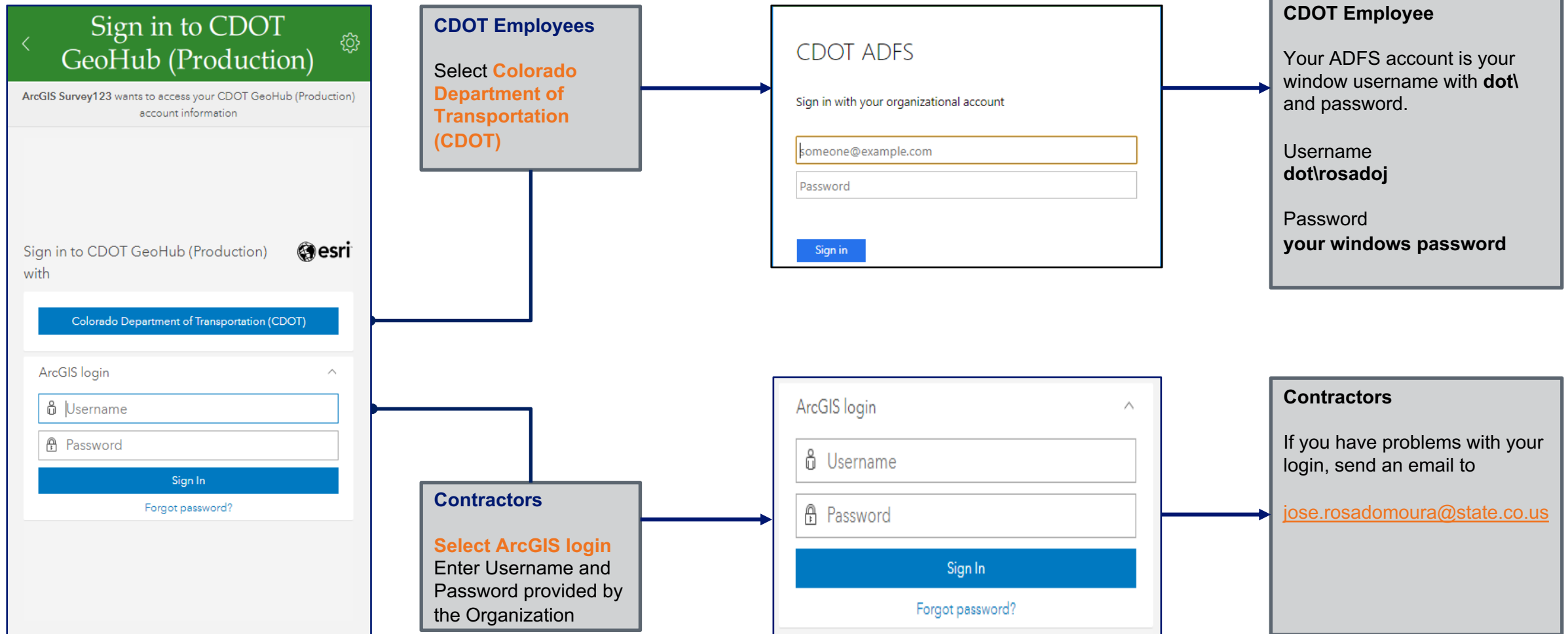
Continue without signing in

esri | THE SCIENCE OF WHERE

3.12.277



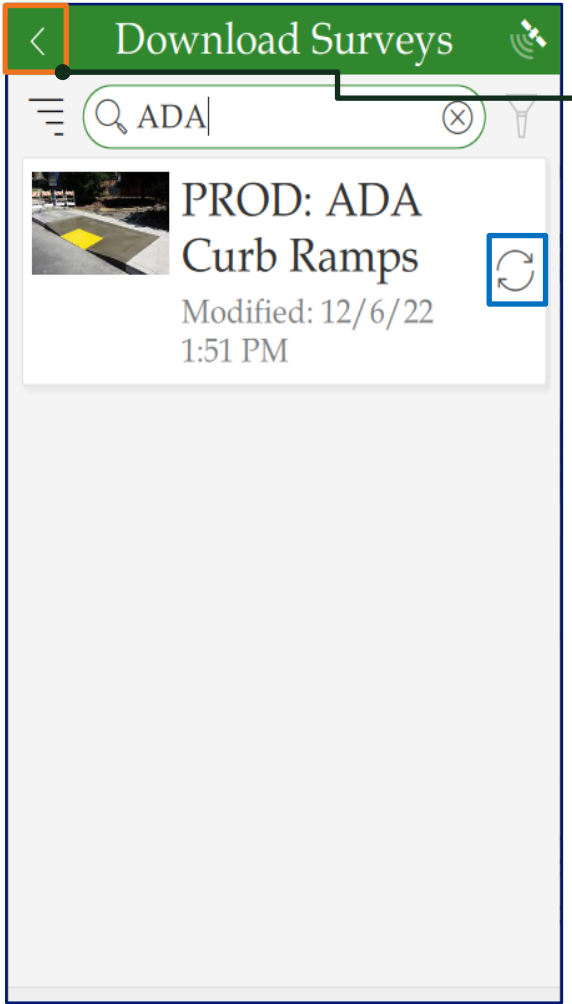
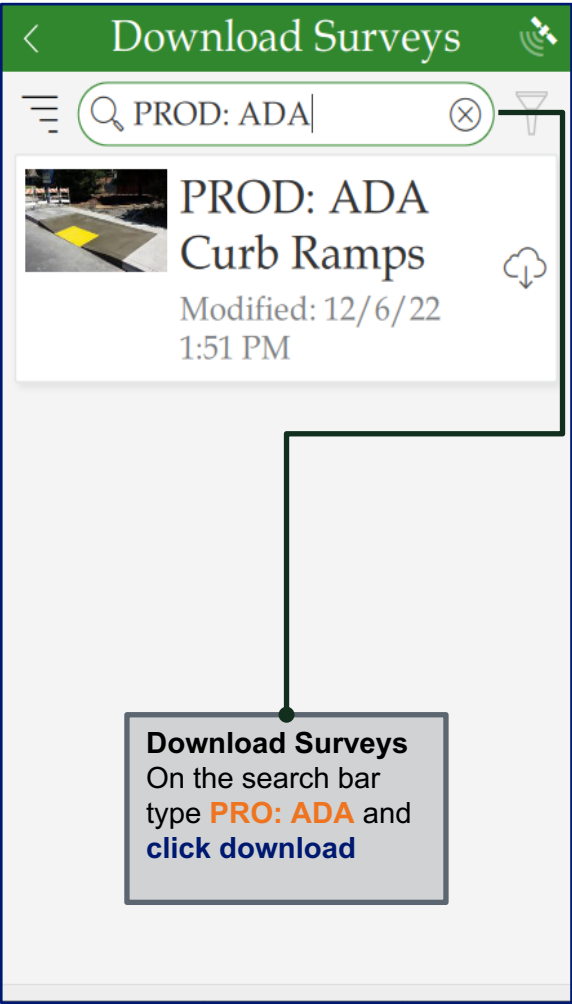
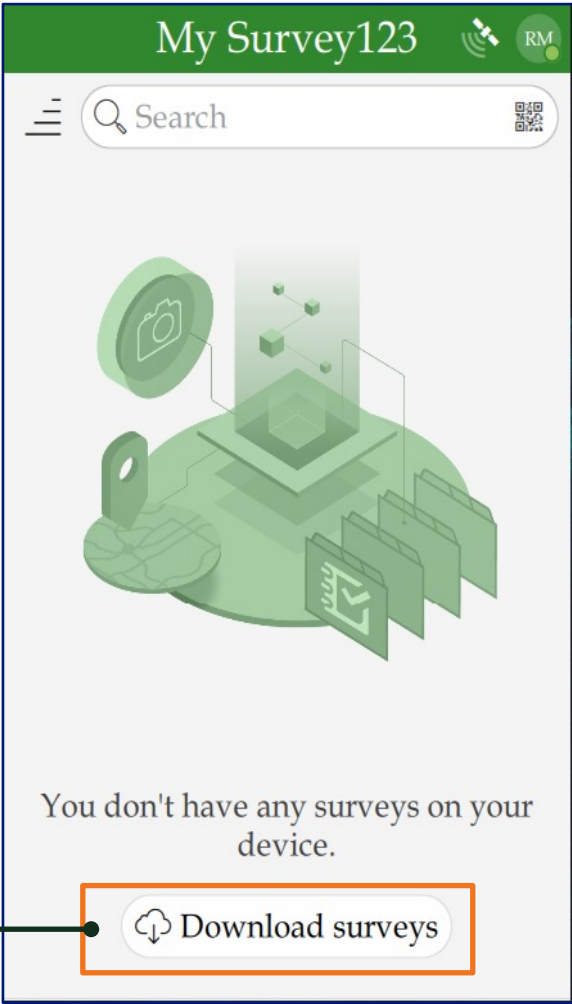
Survey123 Quick Start Guide





Survey123 Quick Start Guide

My Survey123
Click on **Download surveys** to see a list of available surveys to download.



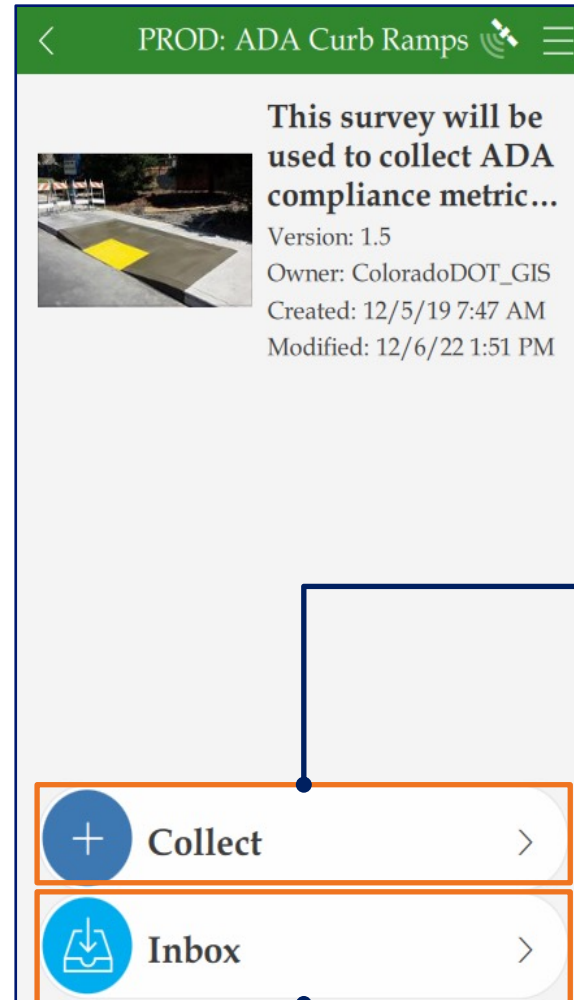
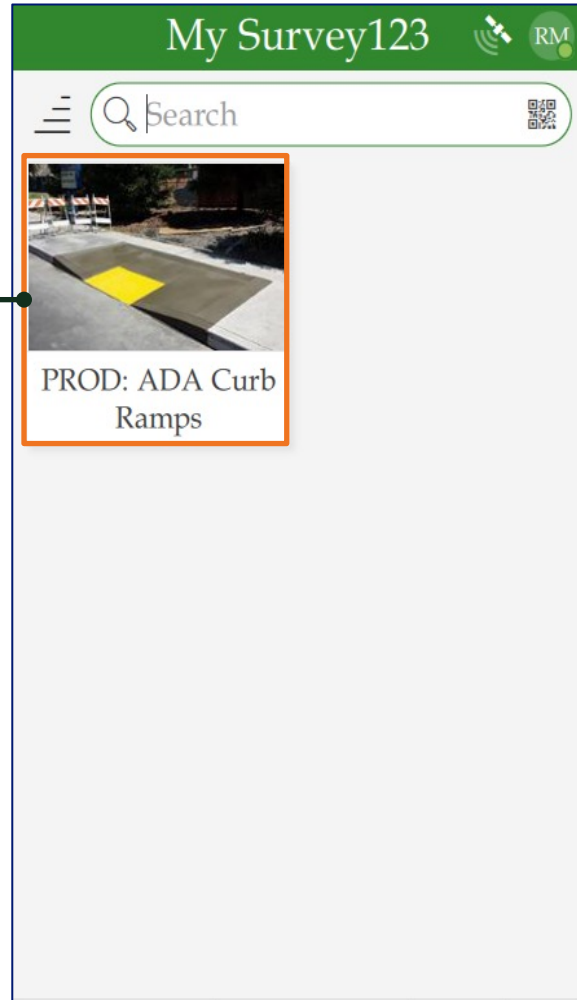
Download Surveys
After the download is complete, **click on** the left arrow.



Survey123 Quick Start Guide

My Survey123
After the survey is downloaded it will appear on the main page.

Click on the **Survey ADA Curb Ramps** survey to open the survey.



Collect
To start a new survey form, not in the database.

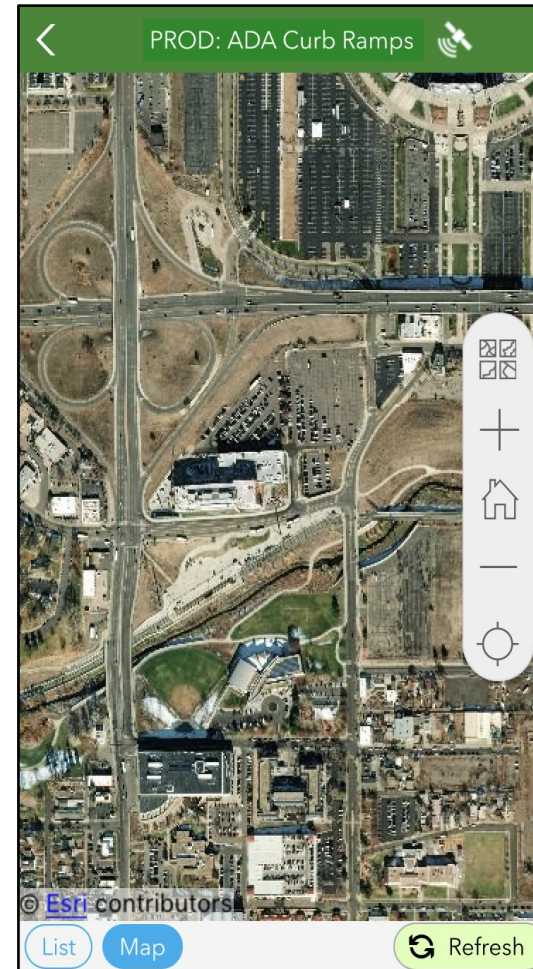
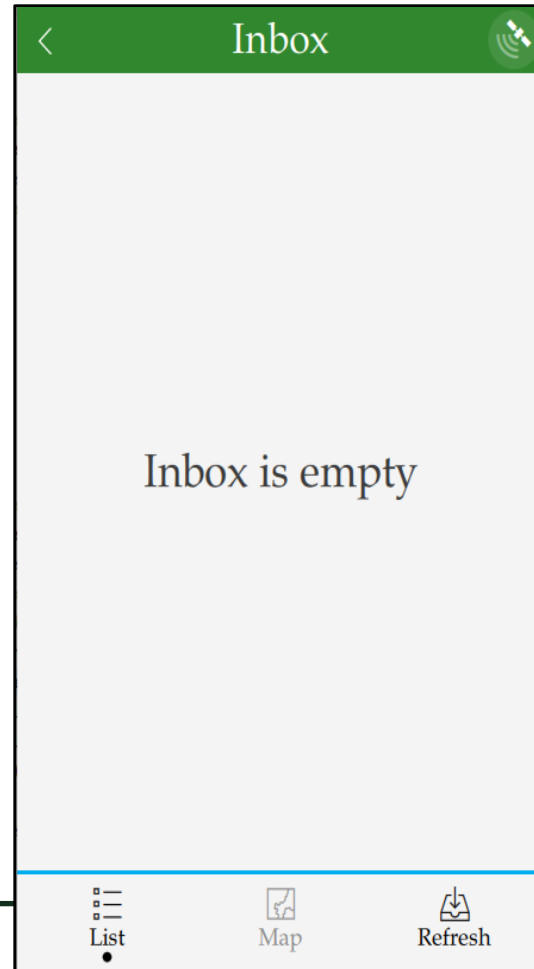
Inbox
To update or replace a Curb Ramp measurement



Survey123 Quick Start Guide

On initial load the Inbox is empty. Click on Map to go to the Map view of the Inbox

Note: Do not click on Refresh in the List View



On the Map view, pan to the location of the curb ramps and click on Refresh. Curb Ramps available in this location are displayed on the Map

Click on one of the curb ramps on the map to open the related survey form.



Once the inbox is loaded from the Map, can click on List below the Map to view all the curb ramps on the list.





Survey123 Quick Start Guide

A list is displayed with all the Curb Ramps loaded in the Map view previously

The screenshot shows the 'Inbox' screen with a search bar and a list of four Curb Ramps. Each entry includes a status icon (a small 's' in a circle), a distance of '1.2 mi', a date and time, and a 'Modified' timestamp. The bottom navigation bar has 'List', 'Map', and 'Refresh' options.

ID	Status	Distance	Date/Time	Modified
088A_001.360_CCR	s	1.2 mi	6/15/2022 12:00	1/17/2023 8:51 AM
088A_001.288_CAA	s	1.2 mi	6/15/2022 12:00	1/17/2023 8:25 AM
088A_001.302_CCA	s	1.2 mi	6/15/2022 12:00	1/17/2023 8:25 AM
088A_001.302_CDA				

The screenshot shows the 'ADA Curb Ramp' form with the following fields:

- Curb Ramp Summary** (expanded)
- Select a Region *** (dropdown menu)
- Date of Inspection *** (calendar icon, Tuesday, Januar...)
- Project Code: *** (text input, red text: Enter in specific project code (i.e. 99999). Must be 5 digits.)
- Project Type: *** (text input)

The bottom right corner has a checkmark icon.

Enter data or select from drop downs for the fields of the survey form. Make sure to fill in all the required fields.



Survey123 Quick Start Guide

Click on the camera to take pictures or click on the folder to attach saved pictures from the device (Photos are optional). Click on the **Submit** button on the bottom right corner of the form to display submit options.

Send Now: It lets the user submit the form data immediately.

Continue this survey: It lets the user return to the form and make any changes to the form entries.

Send in Outbox: It lets the user save the form entries as a draft and submit it later.